

## Inserting the SIM Card

Your satellite phone # \_\_\_\_\_

SIM # \_\_\_\_\_

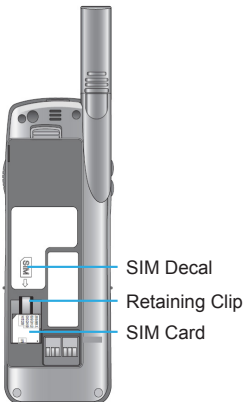
### Iridium 9575 Extreme & PTT



1. Remove the SIM card from the larger card.
2. Remove the battery.
3. Slide the SIM card into the SIM card slot. Follow the card orientation shown on the decal. Be sure the gold contact is facing down.
4. Slide the retaining clip down until you hear a 'click' to secure the SIM card

\*\*\* IMPORTANT : To confirm that the phone works properly, make a free test call to 00 1 480 752 5105 \*\*\*

### Iridium 9555

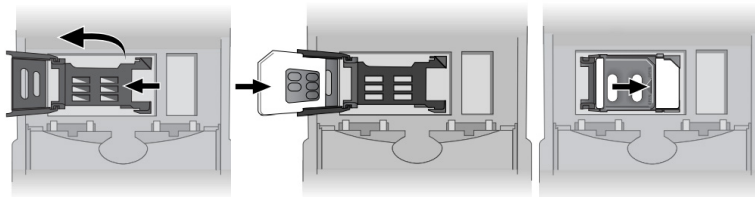


1. Remove the SIM card from the larger card.
2. Remove the battery.
3. Slide the SIM card into the SIM card slot. Follow the card orientation shown on the decal. Be sure the gold contact is facing down.

The card is held in place by a small retaining clip.

\*\*\* IMPORTANT : To confirm that the phone works properly, make a free test call to 00 1 480 752 5105 \*\*\*

### Iridium 9505A



1. Remove the SIM card from the larger card
2. Insert the SIM card into the tray with the notch up and gold plate facing out.
3. Push down the SIM card tray and slide the tray to the right to lock it in place.

\*\*\* IMPORTANT : To confirm that the phone works properly, make a free test call to 00 1 480 752 5105 \*\*\*

*Thank you for choosing SatellitePhoneStore.com!*

## IsatPhone Pro & 2



1. Remove the SIM card from the larger card.
2. Remove the battery cover by using a coin to turn the screw slot until it is vertical.
3. Lift out the battery.
4. Slide the catch down on the SIM holder and flip it outwards.
5. Make sure the angled corner of your SIM card is on your left and slide it into the holder.
6. Flip the holder back into place and slide the catch back up.
7. Insert the battery, replace the cover and turn the screw slot until it is horizontal

**\*\*\* IMPORTANT : To confirm that the phone works properly, make a free test call to 870 776 999 999 \*\*\***

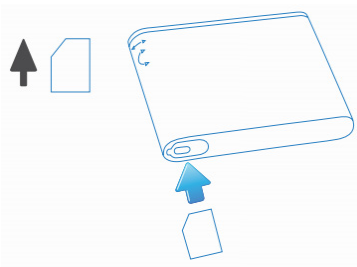
## Iridium GO!



1. Remove the SIM card from the larger card.
2. Remove the battery cover with a flat blade screw-driver, or a small coin.
3. Slide SIM card-holder toward the hinges, and lift to open.
4. Insert SIM card into slot.
5. Close card-holder, and slide it away from the hinges to lock.

**\*\*\* IMPORTANT : To confirm that the device works properly, make an Internet connection \*\*\***

## iSavi IsatHub



1. Remove the SIM card from the larger card.
2. Insert the Micro-SIM card with its gold-contacts facing down.

**\*\*\* IMPORTANT : To confirm that the device works properly, make an Internet connection \*\*\***