

The RS-SAT100 is an application that enables you to text chat through a satellite communication network by connecting an IC-SAT100 or IC-SAT100M using Bluetooth®.
This instruction document shows how to use the application on an Android™ device.

System requirements

The following system is required to use the application. (As of August 2021)

Data device for Android™

Android version 7.0 or later

① Download the application from the Google Play Store. See page 2.

Data device for iOS™

iOS version 12.0 or later

iPadOS version 13.1 or later

① Download the application from the App Store. See page 2.

IC-SAT100

Rev. 1.3 or later for an Android device

Rev. 1.4 or later for an iOS device

IC-SAT100M

Rev. 1.1 or later for an Android device

Rev. 1.2 or later for an iOS device

① The RS-SAT100 has been tested with Android 7.x.x, 8.x, 9.0, and 10.0, iOS 12.x, 13.x, and 14.x, and iPadOS 13.x and 14.x.

① This Instruction document is based on using Android 7.0, iOS 14.2, and RS-SAT100 version 1.0.2 (for an Android device) and 1.0.1 (for an iOS device).

○ Disclaimer

- The application may not work properly, depending on the OS version, installed applications, signal strength, or other reasons.
- Icom is not responsible for any lost profits, data, or consequential, special, indirect, or incidental damages.
- Depending on the OS version or settings, the indications or items may differ.
- The screenshots on these Instructions are just examples, so that the contents may differ from the actual ones.

Features

- You can send a message with a timestamp and a name.
- The received message is displayed on both the transceiver and the mobile device.
- You can select and send the standard text that is set in the application in advance.

Operating notes

- This application supports English and Japanese languages.
- When sending Japanese characters with the application, set the receiving transceiver's language setting to "Japanese." If the receiving transceiver's language setting is different, the characters may not be displayed on the transceiver.
 - ① Use only this application to send a message in Japanese. You cannot send Japanese characters from the transceiver.
- When connecting or disconnecting the transceiver and a Bluetooth Headset, the connection between the transceiver and this application may be temporarily disconnected.
 - If Bluetooth does not reconnect, try to connect again from either the application or the transceiver.

Icom, Icom Inc. and the Icom logo are registered trademarks of Icom Incorporated (Japan) in Japan, the United States, the United Kingdom, Germany, France, Spain, Russia, Australia, New Zealand, and/or other countries.

Android and Google Play are registered trademarks or trademarks of Google LLC, and Google is registered trademark or trademark of Google, LLC. IOS is a trademark or registered trademark of Cisco in the U.S. and other countries and is used under license.

iPadOS is a trademark of Apple Inc., registered in the U.S. and other countries and regions.

App Store is a service mark of Apple Inc.

The Bluetooth® word mark and logos are registered trademarks owned by Bluetooth SIG, Inc. and any use of such marks by Icom Inc. is under license. All other products or brands are registered trademarks or trademarks of their respective holders.

Find and download RS-SAT100

Install this application on your mobile device.

1. Turn ON your mobile device.
2. Touch "Play Store" (Android) or "App Store" (iOS).
3. Enter "RS-SAT100" in the search field and touch search.
 - "RS-SAT100" will be displayed as the search result.
 - ① You may need to enter "RS-SAT100" as a complete word to get the search result.
 - ① If your mobile device does not support the RS-SAT100, "RS-SAT100" may not appear as the search result.
4. Touch "RS-SAT100."
 - Displays the introduction screen of the RS-SAT100.
5. Touch <INSTALL> or <GET> (iOS).
 - Installation starts.
 - After the installation is finished, the RS-SAT100 icon is displayed on the device's screen.

Pairing with the IC-SAT100 or IC-SAT100M

Follow the steps below to set the Bluetooth function of the transceiver.

1. Set the PC Command function to "Bluetooth."
MENU > Functions > PC Command > **Bluetooth**
2. Turn ON the Bluetooth function.
MENU > Bluetooth > **Bluetooth ON/OFF**
3. Select "Waiting Pairing."
MENU > Bluetooth > **Waiting Pairing**
 - ① The Waiting Pairing screen is displayed.

→ **When pairing with an Android device, see page 3 for details.**

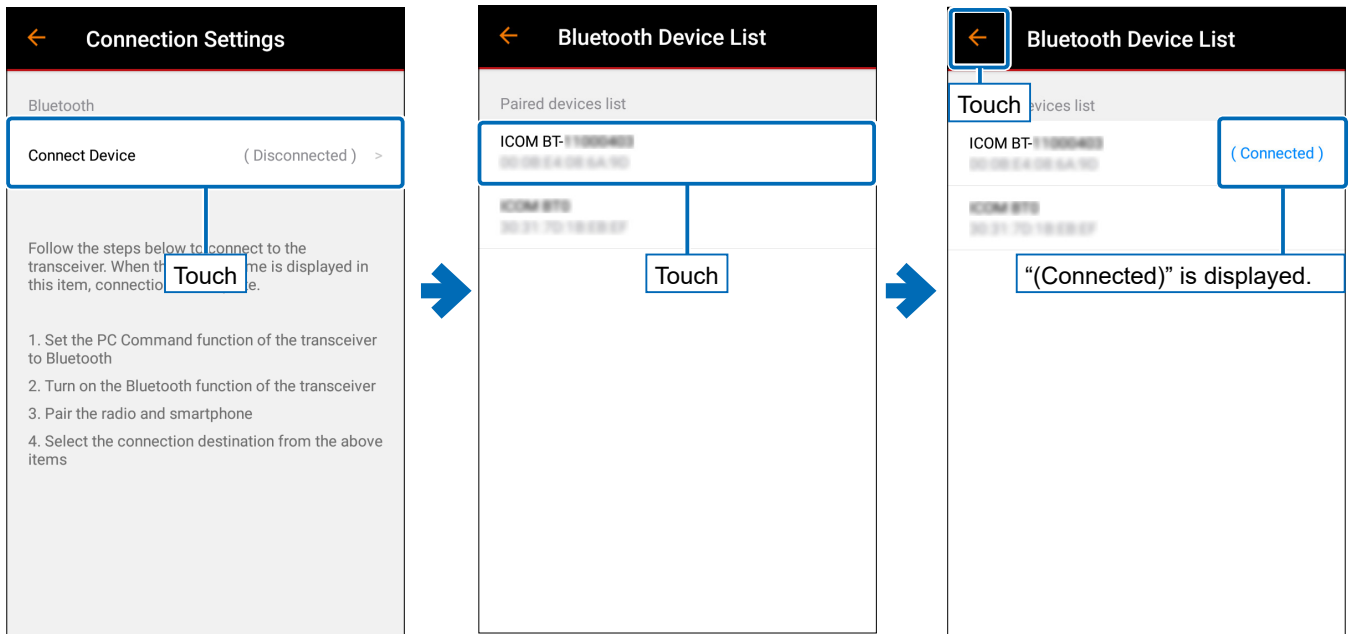
→ **When pairing with an iOS application, see page 4 for details.**

About the Connection Settings screen

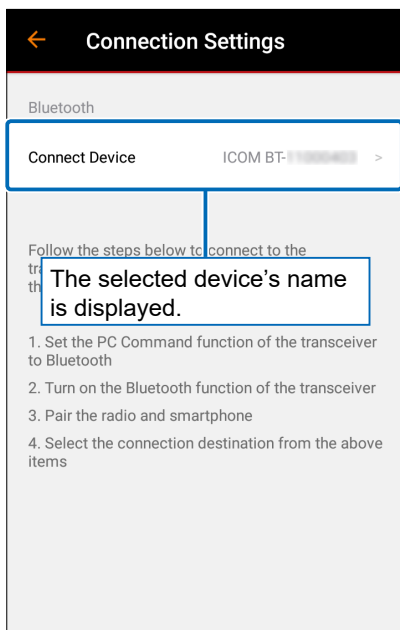
Before using this application for the first time, you must select the Bluetooth connection destination.

When pairing with an Android device

1. Turn ON the Bluetooth function of the Android device.
2. Pair with the transceiver.
3. Touch RS-SAT100 to start the application.
4. Touch "Connect Device" to display the Bluetooth Device List screen.
5. Select the transceiver you want to connect to.
① "(Connected)" is displayed when the transceiver is connected.
6. Touch <=> to return to the Connection Settings screen.



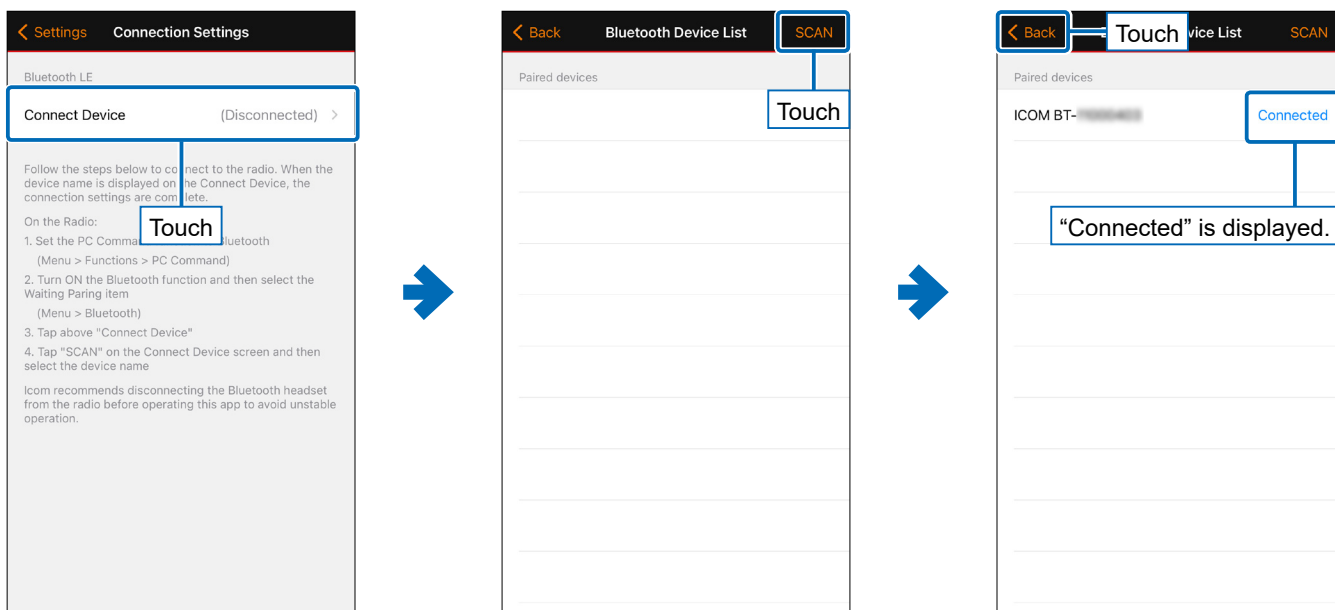
7. Touch <=> again to open the Chat screen.
① This setting can be changed in the Settings screen at any time. (p. 12)



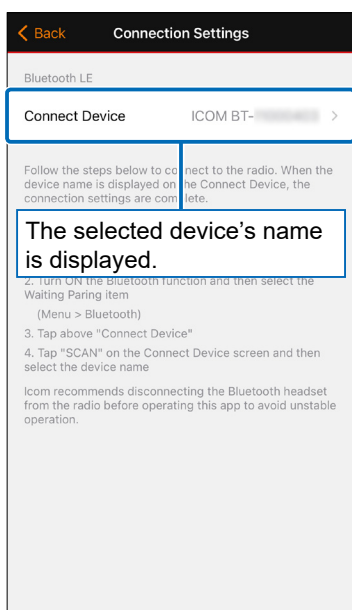
TIP: Touch the transceiver in the Bluetooth Device List screen to disconnect it.

When pairing with the iOS version of the application

1. Turn ON the Bluetooth function of the iOS device.
 - ① **DO NOT** pair the iOS device with the transceiver, pair with only the application.
2. Touch the RS-SAT100 to start the pairing procedure.
3. Touch “Connect Device” to display the Bluetooth Device List screen.
4. Touch <SCAN>, and then select the transceiver from the Available devices screen.
 - ① “Success” is displayed when the pairing succeeds, and “Failure” is displayed when the pairing fails.
5. Touch << Back> to return to the Connection Settings screen.



6. Touch << Back> again to open the Chat screen.
 - ① This setting can be changed in the Settings screen at any time. (p. 12)



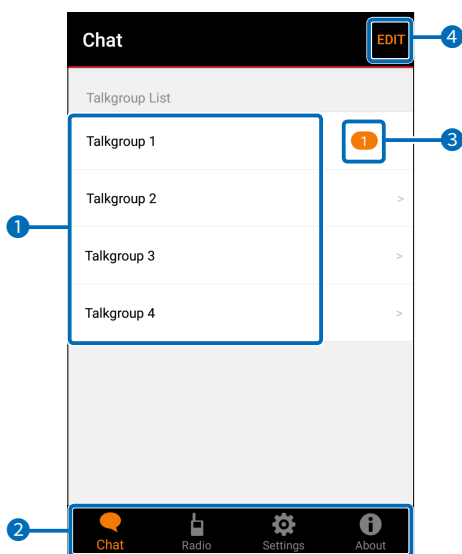
TIP: The transceiver is disconnected when you:

- Touch the transceiver in the Bluetooth Device List screen.
- Touch <SCAN> again.

Chat screen

You can send a message and check a received message.

◇ Talkgroup List



1 Talkgroup List

Touch to open each Talk screen.

① The Talkgroup information automatically obtained from the paired transceiver is displayed.

2 Tab menu

Touch to move to each screen.

Chat screen

Radio screen (p. 8)

Settings screen (p. 9)

About screen (p. 15)

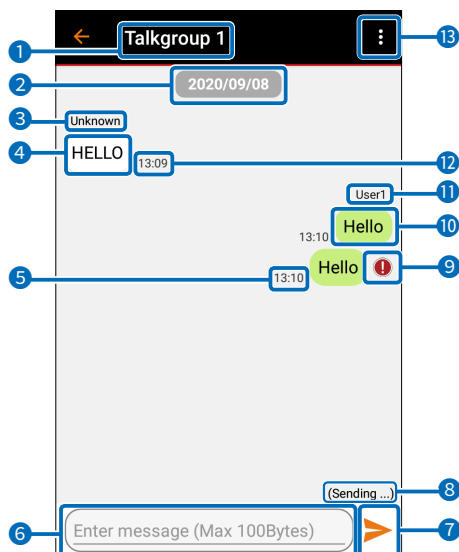
3 Unread icon

Displayed when an unread message is received.

4 [EDIT]

Touch to select the Talkgroups to use.

◇ Talk screen



1 Talkgroup Name

Displays the Talkgroup name selected in the Talkgroup list.

2 Date

Displays the date the message was sent or received.

3 Name (Received Message)

Displays the sender's name.

4 Received Message

Displays a received message.

5 Time (Sent Message)

Displays the time that the message was sent.

- ① When "Add Time" (p. 12) is set to "ON(Pre)" or "ON(Post)," the time is included in the message.
- ① When the message is too long, the time may not be displayed due to the message's character limit.

6 [Enter Message]

Enter the message you want to send.

- ① When the transceiver is not connected, you cannot enter the message.
- ① See page 7 for the number of characters that can be entered.

7 Send button

Touch to send the message.

8 Transmission status

Displays the transmission status.

- (Requesting ...): Displayed until transmission is possible.
- (Sending ...): Displayed when sending the message or waiting for a response.
- (Failed): Displayed when sending the message fails.

9 Stop sending icon

Displayed when the message could not be sent.

10 Sent Message

Displays the sent message.

11 Name (Sent Message)

Displays the name set in the User Name setting in the Settings screen.

- ① When "Add Name" (p. 12) is turned OFF, or when a message is sent from the transceiver, "Unknown" is displayed.
- ① You can change the name in the Settings screen. (p. 9)
- ① When the message is too long, the name may not be displayed due to the message's character limit.

12 Time (Received Message)

Displays the time that the message was received.

13 Overflow menu

Touch to display the following menu.

[Change connect device]

Change the transceiver to connect to.

- ① See page 3 for details.

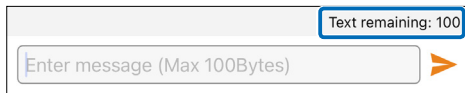
[Send Standard Text]

Sends the Standard Text.

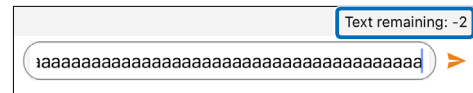
- ① See page 7 for details.

About the character format and the character limit

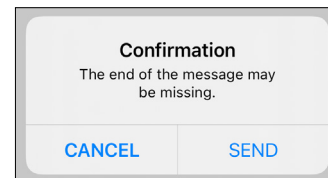
- In this application, alphanumeric and symbols (excluding “ and ,) are treated as “ASCII format” characters, and other characters (Japanese, double-byte characters, and so on.) are treated as “Unicode format” characters.
- Up to 100 ASCII format characters can be sent.
 - ① When “Add Name” (p. 12) or “Add Time” (p. 12) is turned ON, or a Unicode format character is included, the number of characters that can be entered at one time will decrease.
- When touching the [Enter Message], the number of remaining characters is displayed in the upper right corner. When more than the character limit is entered, the number of remaining characters is displayed as a negative number. When touching the Send button in that state, a confirmation dialog is displayed. Touch “SEND” to send a message or touch “CANCEL” to cancel the transmission.



When no character is entered



When more than the character limit is entered



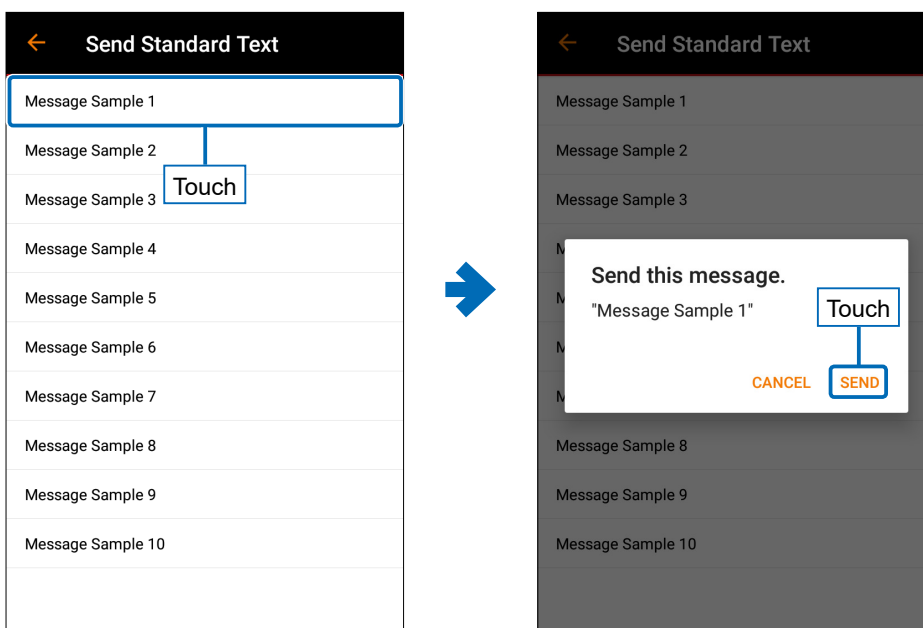
How to send the Standard Text

You can send the Standard Text from the Overflow menu on the Talk screen.

1. Touch the Overflow menu, and then touch the “Send Standard Text.”

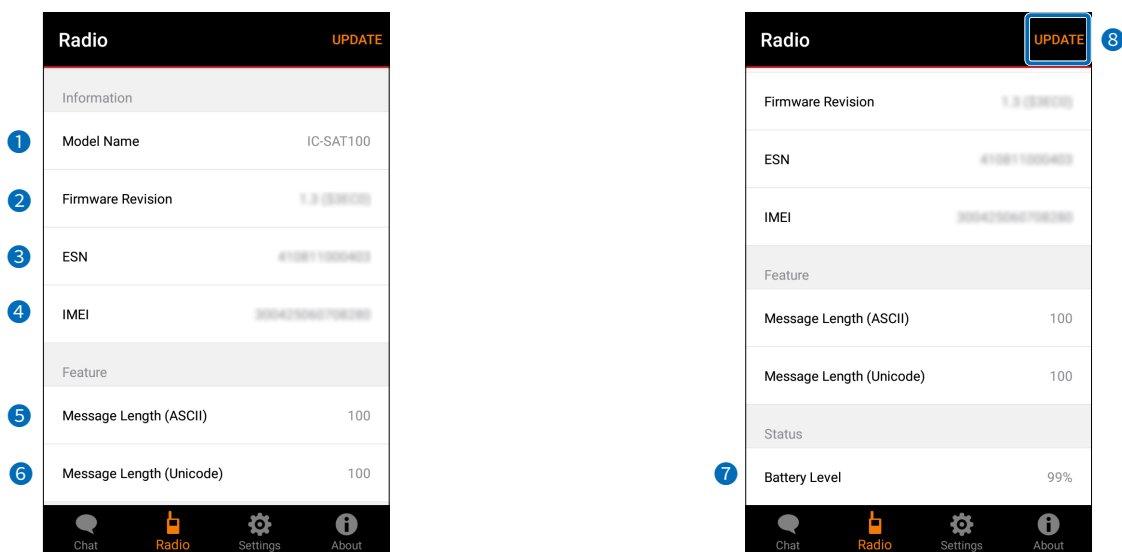


2. Select the Standard Text that you want to send.
 - A confirmation dialog is displayed.
3. Touch “SEND.”
 - The selected Standard Text is sent, and then returns to the Talk screen.
 - ① You can change the Standard Text contents in “Edit Standard Text” on the Settings screen. (p. 11)



Radio screen

You can check the transceiver's information.



1 Model Name

Displays the paired transceiver's name.

2 Firmware Revision

Displays the transceiver's firmware version.

3 ESN

Displays the transceiver's ESN (Electronic Serial Number).

4 IMEI

Displays the transceiver's IMEI (International Mobile Equipment Identifier).

5 Message Length (ASCII)

Displays the maximum number of characters that can be entered in ASCII format.

6 Message Length (Unicode)

Displays the maximum number of characters that can be entered in Unicode format.

TIPS:

- In this application, alphanumeric and symbols (excluding " and ,) are treated as "ASCII format," and other characters (Japanese, double-byte characters, etc.) are treated as "Unicode format."
- The ASCII format can send up to 100 characters. When the Unicode format character is included, up to 50 characters can be sent because the amount of information is large. If the more than the number of characters that can be sent is entered, the excess part is automatically truncated when sending.

7 Battery Level

Displays the transceiver's battery level.

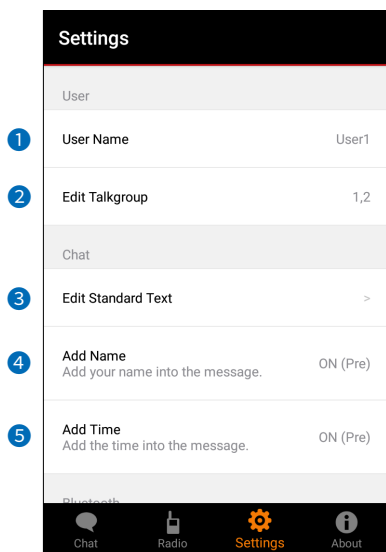
① When the IC-SAT100M is paired, "(Unsupported)" is displayed.

8 [UPDATE]

Touch to update the transceiver's information.

Settings screen

You can change the application's settings.



1 User Name

Enter the user name that will be displayed when sending the message. (p. 11)

2 Edit Talkgroup

Select the Talkgroup you want to use. (p. 11)

3 Edit Standard Text

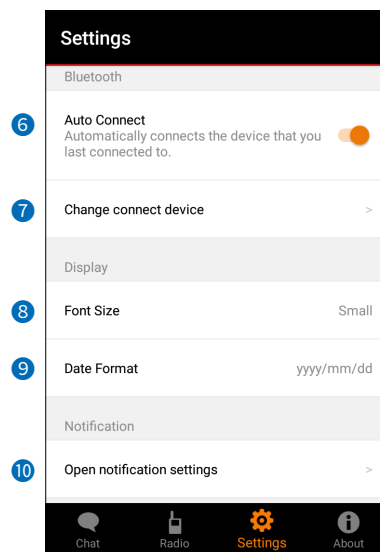
Select to edit the Standard Text. (p. 11)

4 Add Name

Select whether or not to add the user name in the message to send. (p. 12)

5 Add Time

Select whether or not to add the time in the message to send. (p. 12)



6 Auto Connect

Select whether or not to automatically connect the last connected transceiver using Bluetooth when the application is started.

7 Change connect device

Select to change the connection destination. (p. 12)

8 Font Size

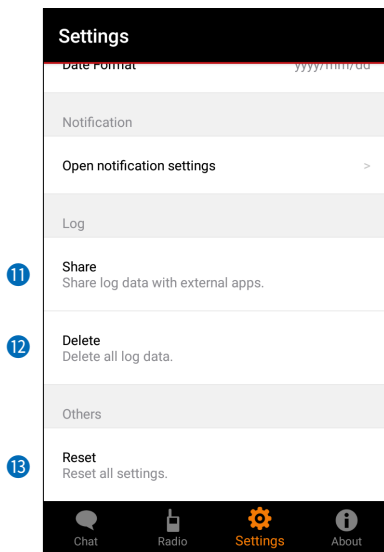
Select the character size of the messages, date, and time on the Talk screen. (p. 13)

9 Date Format

Select the date display format on the Talk screen. (p. 13)

10 Open notification settings (For only an Android device)

Open the mobile device's notification settings. (p. 13)



11 Share

Select the external application to link to transfer or backup the log files. (p. 13)

12 Delete

Deletes all log files and chat contents. (p. 14)

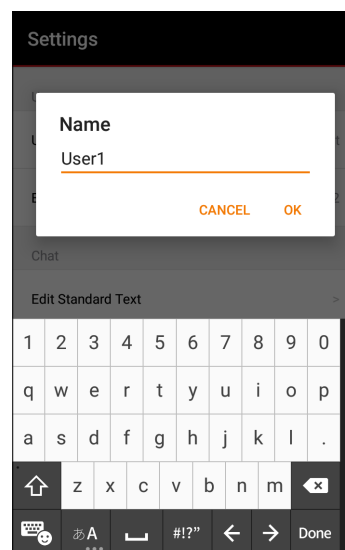
13 Reset

Resets all settings of the Settings screen to their default values. (p. 14)

◇ User Name

Enter the user name that will be displayed when sending the message.

① You can enter up to 20 characters.

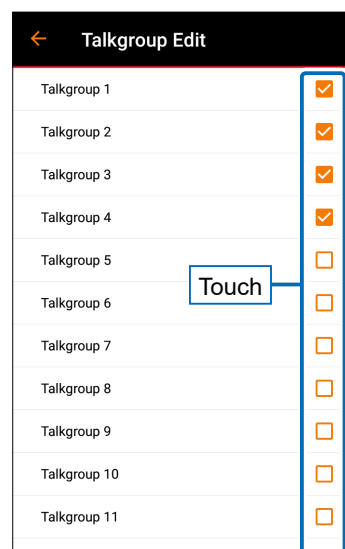


◇ Edit Talkgroup

Select the Talkgroup (1 ~ 15) you want to use. The checked Talkgroups can be used on the Talk screen.

① You can select multiple Talkgroups.

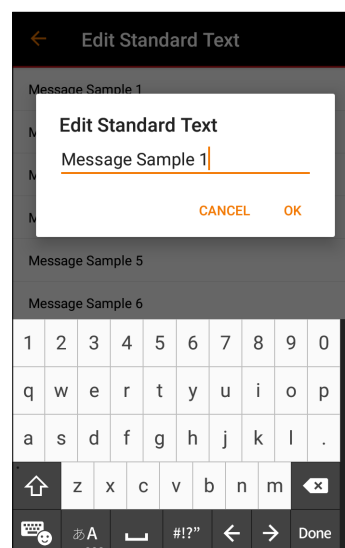
① You can also select them from "EDIT" on the Talkgroup List screen. (p. 5)



◇ Edit Standard Text

You can edit the Standard Text that is used in a message.

① See page 7 for the number of characters that can be entered.

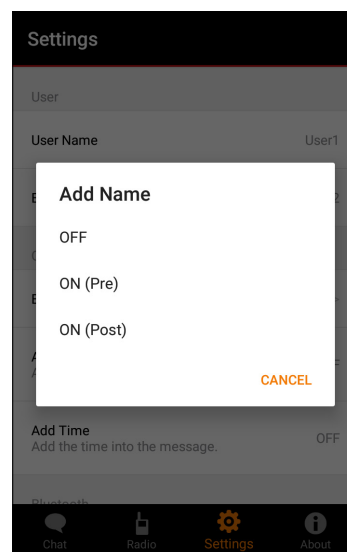


◆ Add Name

Select whether or not to add the user name in the message to send.

① The name set in "User Name" is displayed. (p. 11)

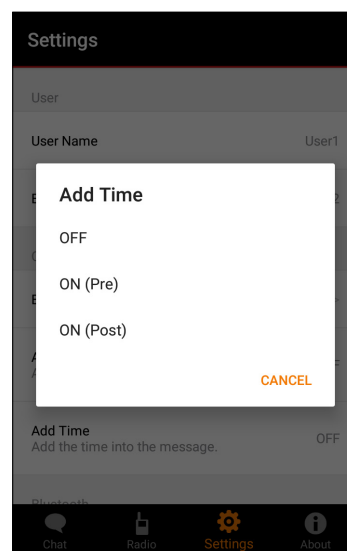
- OFF: The user name is not added to the message.
- ON (Pre): The user name is added at the beginning of the message.
- ON (Post): The user name is added at the end of the message.



◆ Add Time

Select whether or not to add the time to the message to send.

- OFF: The time is not added to the message.
- ON (Pre): The time is added at the beginning of the message.
- ON (Post): The time is added at the end of the message.

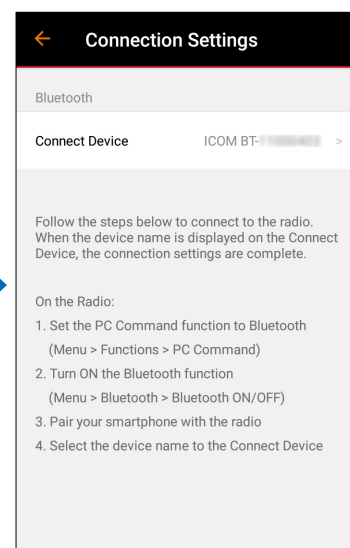
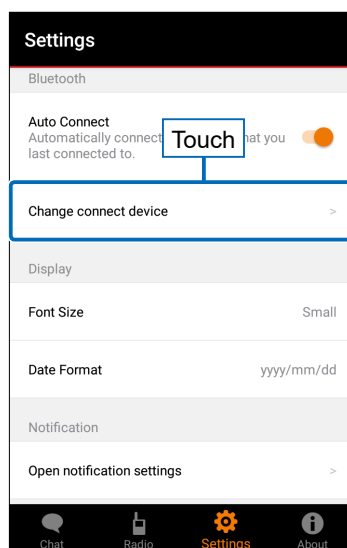


◆ Change connect device

Change the connection destination.

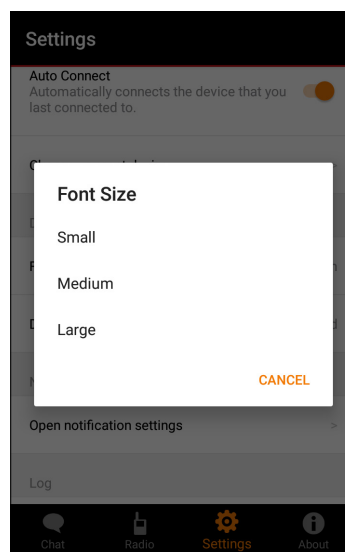
- When touching this item, the Connection Settings screen is displayed.

① See page 3 for details.



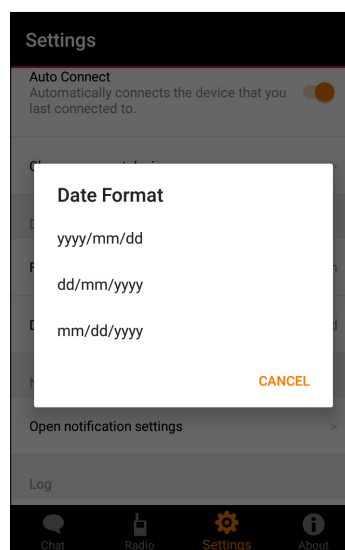
◇ Font Size

Select the font size of the message display, date, and time on the Talk screen from Small, Medium, and Large.



◇ Date Format

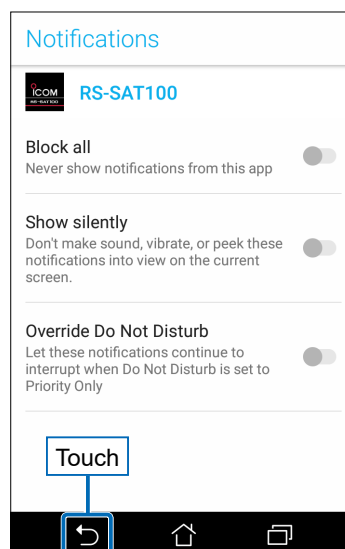
Select the date display format on the Talk screen from “yyyy/mm/dd,” “dd/mm/yyyy,” or “mm/dd/yyyy.”



◇ Open notification settings (For only an Android device)

Open the mobile device’s notification settings. Touch the back button of the mobile device to return to the application screen.

① The position of the back button may differ, depending on the mobile device.

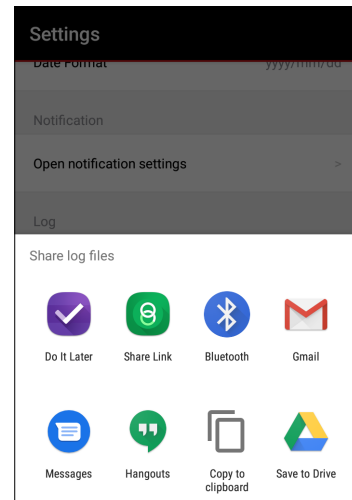


◆ Share

Select the external application to transfer or backup the log files, or to email them.

The following methods can be used.

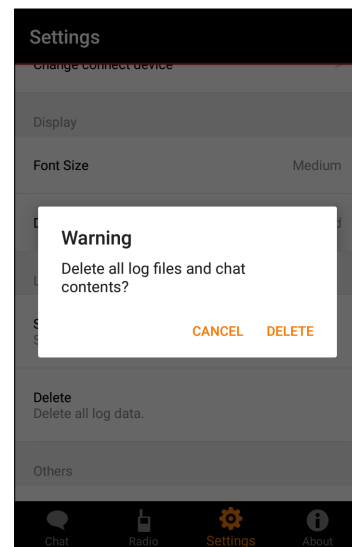
- Transfer the log files to an external device using the Bluetooth file transfer function.
- Save the log files to the microSD card using the file manager.
- Send the log files by e-mail using the e-mail application.



◆ Delete

Deletes all log files and chat contents.

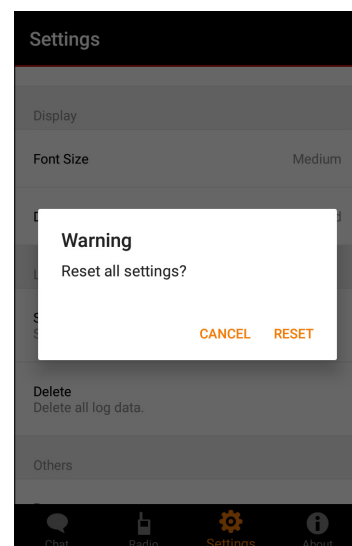
- ① Touch "DELETE" in a confirmation dialog to delete.



◆ Reset

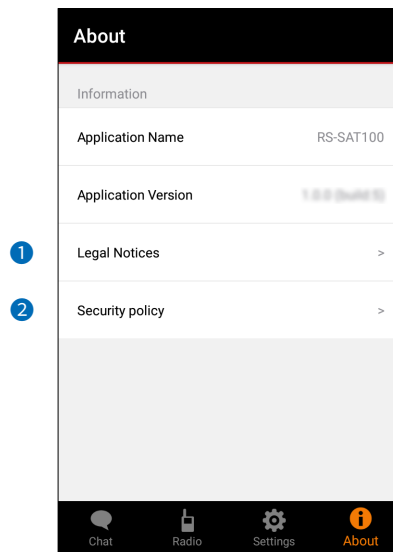
Resets all settings of the Settings screen to their default values.

- ① Touch "RESET" in a confirmation dialog to reset.



About screen

You can check the information about this application.



1 Legal Notice

Displays the information on the open-source software used in this application.

2 Security policy

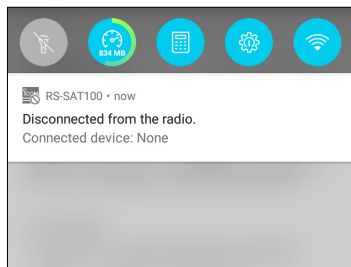
Displays the “Privacy Policy” page of the Icom website.

Other functions

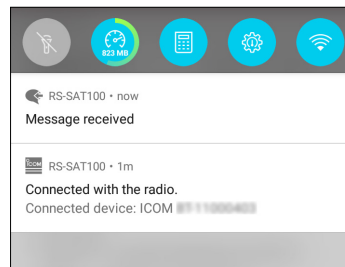
◇ Local Notification

You can check the connection status and notifications from the status bar or notification.

- ① When the Application Notification setting is turned OFF, you will not be notified.
- ① If the notification is not displayed through the Application Notification setting is turned ON, restart the application.



When the transceiver is disconnected



When the transceiver is connected,
and the message is received

◇ Background Operation (For only an Android device)

Even when the application runs in the background, the connection status can be displayed, and the message's receipt can be notified.

- ① When the Application Notification setting is turned OFF, they will not be notified.
- ① If the notification is not displayed, even though the Application Notification setting is turned ON, restart the application.



When the transceiver is connected



When the transceiver is disconnected



When a message is received

Troubleshooting

PROBLEM	POSSIBLE CAUSE	SOLUTION	REF.
You cannot connect the transceiver through Bluetooth.	<ul style="list-style-type: none"> The Bluetooth function in either the transceiver or the application is turned "OFF." The Bluetooth device setting is incorrect. Other Bluetooth devices are operating around you. Other wireless LAN or electric devices may interfere. The distance is too far from the mobile device. The old pairing information still remains in the transceiver. 	<ul style="list-style-type: none"> On both the transceiver and the mobile device, turn ON the Bluetooth function. Correct the setting in the Settings screen. Stop other Bluetooth devices, or move away from them. Stop other wireless LAN or electric devices, or leave more space from them. Bring the mobile device closer to the transceiver. Delete the old pairing information on the transceiver's BT Device List. 	p. 12
You cannot send a message.	<ul style="list-style-type: none"> The satellite connection of the transceiver is out of range. Bluetooth is not connected. 	<ul style="list-style-type: none"> Send after changing your location. Wait for a while before sending it. Connect the transceiver and the mobile device through Bluetooth from the Settings screen. 	p. 12
When receiving a Japanese message, it is not displayed in the transceiver's display.	<ul style="list-style-type: none"> The language setting of the transceiver is not set to "Japanese." 	<ul style="list-style-type: none"> On the transceiver, set the language setting to "Japanese." 	
You cannot check the connection status or message notification in the status bar.	<ul style="list-style-type: none"> The notification setting of the mobile device is turned OFF. 	<ul style="list-style-type: none"> Turn ON the notification setting of the mobile device. 	
The end of the message is missing.	<ul style="list-style-type: none"> The message is too long. 	<ul style="list-style-type: none"> Reduce to within the number of characters that can be entered. Reduce the double-byte characters and symbols. 	p. 7
You cannot send the name or the time.	<ul style="list-style-type: none"> "Add Name" or "Add Time" is turned OFF. The message is too long. 	<ul style="list-style-type: none"> Turn ON "Add Name" or "Add Time." See the "The end of the message is missing."(above). 	p. 12